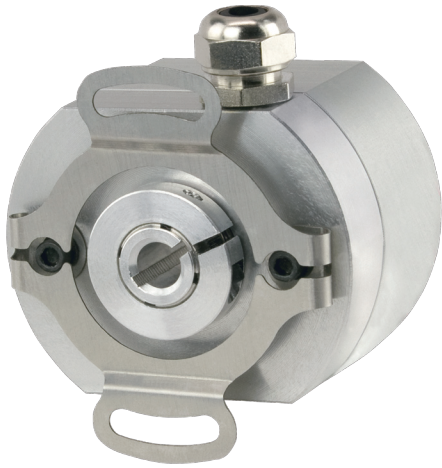


MODEL 960 – SINGLE TURN ABSOLUTE ENCODER



Ø2.0"

FEATURES

- Low-Profile – 1.55"
- Thru-Bore or Hollow Bore Styles
- Industrial Grade, Heavy Duty Housing
- State-of-the-Art Opto-ASIC Circuitry

The single turn Model 960 Absolute Series Encoder provides a unique solution to a wide variety of industrial applications requiring absolute position information. By providing a low profile package of just 1.55", as well as a variety of hollow and thru-bore sizes and an easy to use flexible mounting system, the Model 960 goes where traditional absolute encoders do not fit. In addition, its innovative Opto-ASIC circuitry, coupled with its digital output, make it an excellent choice in those applications plagued by an unusually high level of electrical noise. The Model 960 can easily be mounted directly on a motor shaft, bringing the advantage of absolute positioning in an all metal housing, while eliminating the fixtures, couplers and adapters required by other absolute encoder designs.

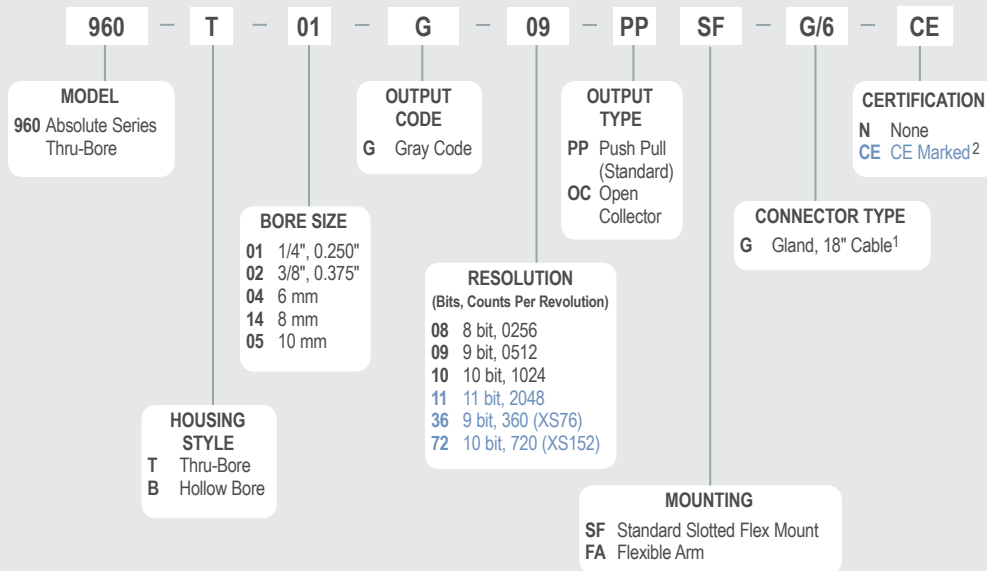
COMMON APPLICATIONS

- Machine Tools, Robotics, Telescopes, Antennas, Rotary & X-Y Positioning Tables, Medical Scanners

Not recommended for new applications.

MODEL 960 ORDERING GUIDE

Blue type indicates price adder options. Not all configuration combinations may be available. Contact Customer Service for details.



NOTES:

- For non-standard cable lengths, add a forward slash (/) plus cable length expressed in feet. Example: G/6 = 6 feet of cable.
- Please refer to Technical Bulletin [TB100: When to Choose the CE Mark](#) at encoder.com.

